



Intelligent networks for stadiums



IN TODAY'S MODERN ARENAS, INDIVIDUAL TASKS NEED INDIVIDUAL AND STATE-OF-THE-ART SOLUTIONS

For many years, stadiums have brought the masses together. With spectacular sporting events, stunning live performances, and breathtaking ceremonies, there is a clear goal: creating a unique atmosphere and sense of unity while guaranteeing safety for the thousands of spectators.



Like other technologies, public building design and security requirements are evolving. New facilities include multi-purpose areas that can be repurposed for a range of uses from corporate meetings to social events. Riedel has extensive knowledge tying together the most complex technologies to deliver simple and reliable connectivity in today's modern arenas. The company is also a leader in supporting security concepts to enable the organizers, Blue Light service, contractors and other involved personnel to communicate safely and effectively with each other.

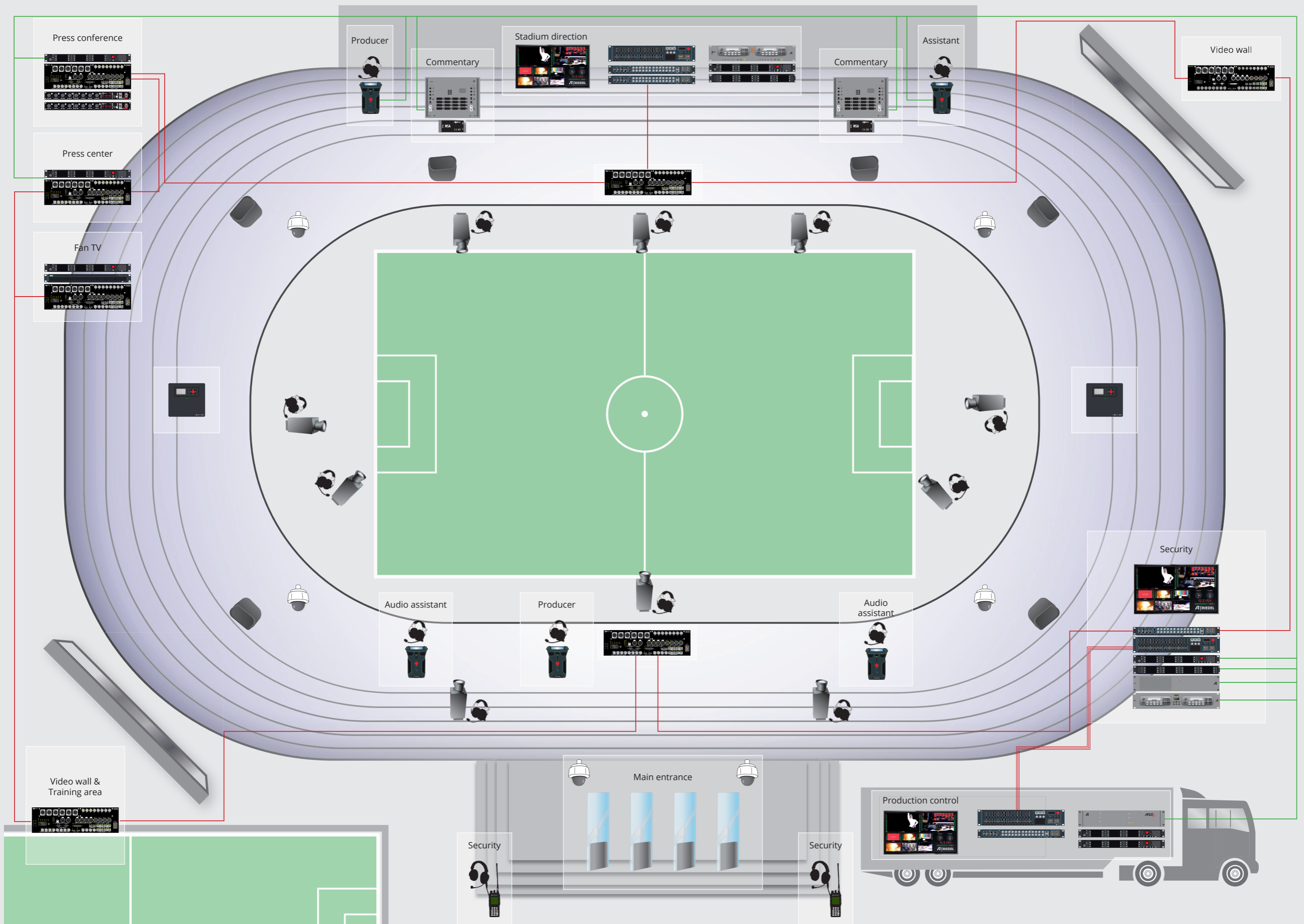
Whether it's Union's Stadion An der Alten Försterei, OSC Lille's Stade Pierre Mauroy or the new Stade des Lumières of Olympique Lyonnais: Riedel solutions support the majority of the event's media requirements and brings added functionality to multi-use rooms around the stadium. Always with a reliable and integrated concept built upon a technical infrastructure that is always one step ahead of any issues.

The deployment of the Riedel technical infrastructure reflects our decision to embed state-of-the-art technology in our brand-new stadium. The resulting installation exceeds our needs with respect to sports events and also enables us to address all types of events with very valuable flexibility.

Jean-Yves Meilland, Director of OL Images at Olympique Lyonnais Group.

The key, beyond security and reliability, is the homogenization of both control and communications across all areas, while the simplicity of Riedel's infrastructure enables quick switching between points; whether it is lights in the disabled toilets, providing journalists with up-to-date information and video in the conference room, or streaming live video throughout the concourses and to the stadium's enviable VIP rooms.

Riedel's stadium setup is an example of how simple and reliable these systems can truly be, given the right combination of a well thought out digital infrastructure and efficient engineering.



Riedel Product Lines

MEDIORNET - The Real-Time Media Network

- One fiber-based network infrastructure for broadcast and entertainment
- Integration of all video, audio, data and communication signals
- Future-proof – free signal-routing without rewiring
- Intuitive, easy-to-learn operation



ARTIST - The Digital Matrix Intercom

- Distributed masterless system architecture for reduced wiring and installation costs
- Seamless integration of VoIP SIP PABX and mobile HF radio (conventional and TETRA)
- Easy and intuitive programming for reduced training and service
- German engineering and quality manufacturing



BOLERO - Wireless Intercom

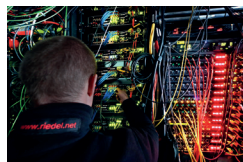
- Up to 10 beltacks per antenna
- 100 antenna, 100 beltack system capacity
- Best-in-class voice clarity
- 6-channel beltack plus dedicated REPLY button
- Built-in microphone and speaker for Walkie-Talkie mode
- Decentralized AES67 IP networked antennas
- Seamless integration into RIEDEL'S ARTIST intercom matrix



Riedel Managed Technology



Intercom & Radio Solutions



Media Network Solutions



RF Camera Solutions



CCTV Solutions



Access Control & Accreditation Solutions



Riedel Communications GmbH & Co. KG
Uellendahler Str. 353 | 42109 Wuppertal | Germany
Phone +49 (0) 202 292-90 | info@riedel.net | www.riedel.net